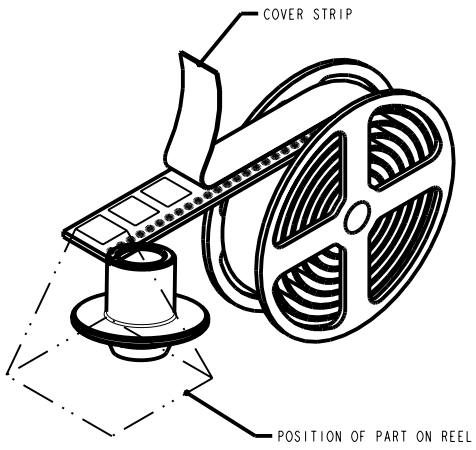
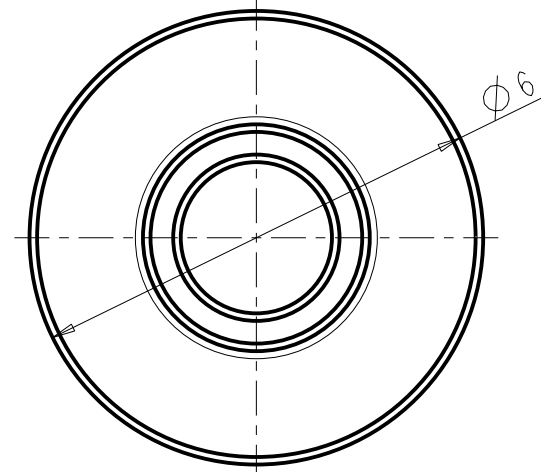
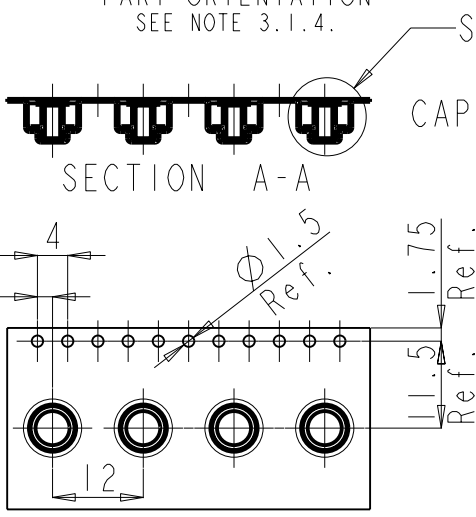


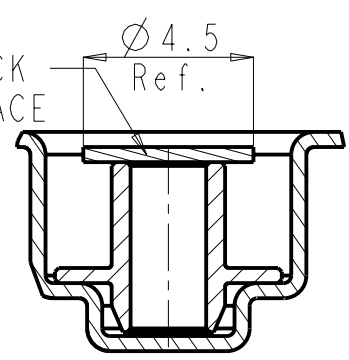
SECTION A-A



TAPE AND REEL PART ORIENTATION SEE NOTE 3.1.4.



SEE DETAIL A
CAP FOR PICK AND PLACE



DETAIL A SCALE 5.000

- DESCRIPTION AND APPLICATION: MACHINED PART FOR USE IN PORTABLE COMMUNICATION EQUIPMENT.
- APPLICABLE DOCUMENTS:
 - 1213933C02 MOTOROLA QUALIFICATION PROCEDURE for Formed Metal Parts
 - 12M80967A78 MOTOROLA VENDOR MATERIAL QUALITY CONTROL
 - 12S10601A MOTOROLA PACKAGING RULES FOR VENDORS
 - 12S22968 MOTOROLA MARKING STANDARD
 - 12G13933A01 MOTOROLA RECEIVING BAR CODE SPECIFICATION
 - ASME Y14.15M-1994 DIMENSIONING AND TOLERANCING FOR ENGRG DWGS.
 - 7-04-00-07 MCIL 1st ARTICLE APPROVAL PROCEDURE ASTM D-1238.
 - 12M80957B70 MOTOROLA RECYCLE REMARK.
 - 12M02897W18 REV K, APDX C, SCTN, 2 MOTOROLA CONTROLLED AND REPORTABLE MATERIALS DISCLOSURE.
 - 12M09176A72 MOTOROLA DECORATED SURFACE RELIABILITY REQUIREMENT.

- REQUIREMENTS:
 - GENERAL:
 - PARTS SHALL BE CLEAN AND FREE OF ALL FOREIGN MATTER.
 - DIMENSIONING AND TOLERANCING PER ANSI Y14.5.
 - DIMENSIONS MARKED [X] ARE CRITICAL CHARACTERISTICS AND REQUIRE S.P.C. REPORT PER MOTOROLA SPEC. 12M80967A78.
 - PACKAGING FOR SHIPMENT: PER 12S10601A.
 - MATERIALS:
 - MATERIAL: CARBON STEEL 9 S Mn Pb 36
FINISH: TIN 2.5-6.5 MICRON OVER NIKEL PLATING 1.5-2.5 MICRON
 - PART MUST COMPLY WITH ALL REQUIREMENTS OF 12M07897W18, REV H, APPENDIX C
 - PART MUST MEET THE REQUIERMENTS OF IPC/JEDEC J-STD-020C (260C) USING A PEAK TEMPERATURE OF 260 C FOR PB FREE REFLOW.
 - THE EFECTIVE SOLDERING AREA IS THE FLANGE SURFACE. THE CYLINDRRIC PART INSERTED INTO THE PCB WAS NOT CONSIDERED FOR THE RESISTANCE CALCULATION.
 - MECHANICAL (UNLESS OTHERWISE SPECIFIED):
 - MARKING PER 12S22968.
 - VENDOR WILL PROVIDE FOR 1st ARTICLE INSPECTION:
 - 5 IDENTIFIED ITEMS.
 - MATERIALS COC.
 - FULL DIMENSION INSPECTION REPORT INCLUDING Cp AND Cpk CALCULATION FOR [X] DIMENSIONS.

- VENDOR QUALITY ASSURANCE PROVISIONS: PER 12M80967A78 AND 12M05022A42.
- EXCEPTIONS: NO CHANGE SHALL BE ALLOWED ON PRODUCTION MATERIAL, REGARDLESS OF WHETHER SUCH CHANGE AFFECTS REQUIREMENTS SPECIFIED, WITHOUT PRIOR EXPLICIT WRITTEN APPROVAL BY MOTOROLA PHYSICAL DESIGN AND PURCHASING DEPARTMENTS.

REV	DESCRIPTION	MEMO
T1	RELEASED FOR QUOTATION AND SAMPLES E.HERZOG	Jan 25 2006
T2	RELEASED FOR 200 UNITS T&R NOT MANDATORY E.HERZOG	Feb 02 2006
T3	RELEASED FOR 200 UNITS MATERIAL AND PLATING CHANGED E.HERZOG	Feb 07 2006
T4	RELEASED FOR 200 UNITS MATERIAL AND PLATING CHANGED E.HERZOG	Mar 05 2006
T5	RELEASED FOR 4000 UNITS E.HERZOG	05 Apr 2006
A	FIRST RELEASE E.HERZOG, R030343	07 May 2006
B	SOLDERING INSTRUCTION NOTE 3.2.3. E. HERZOG C140280	18 JUL 2006
C	TOLERANCE CHANGED C187509 Sher Y.	25 Feb 2007
D	DIMENSIONS ADDED C208284 Sher Y.	28 MAY 2007
E	UPDATED TOLERANCE ECN: C298385 APP: BOAZ SIMAN-TOV	14 AUG 2008

DATA BASE:		DESCRIPTION			CAT. NO.					
COMPUTER GENERATED DRAWING DO NOT REVISE MANUALLY.	TOLERANCES: GENERAL: ±0.2mm HOLES: ANGLES: THREADS:	PLATING:	MATERIAL: SEE NOTE 3.2.1				SPACER M2x0.4 , SMT (T&R)			
DO NOT SCALE	GRAPHICS:	PAINING:	FINISH: SEE NOTE 3.2.1							
					DESIGNED	E.HERZOG	25-Jan-06	CHECKED	E.HERZOG	25-Jan-06
					DRAWN	E.HERZOG	25-Jan-06	APPROVED	A.ROTMAN	25-Jan-06
					SCALE	9.0	SHEET	1 OF 1	43B87504V76	
									REV	E